

Anti-CTLA4 hIgG1 Reference Antibody (Ipibio)

Product Information

Product Name	Anti-CTLA4 hIgG1 Reference Antibody (Ipibio)
Storage temp.	Store at 2-8°C short term (1-2 weeks).Store at $\leq -20^{\circ}\text{C}$ long term. Avoid repeated freeze-thaw.
Catalog# / Size	GM-87801MAB-1mg / 1 mg GM-87801MAB-5mg / 5 mg GM-87801MAB-25mg / 25 mg GM-87801MAB-50mg / 50 mg GM-87801MAB-100mg / 100 mg

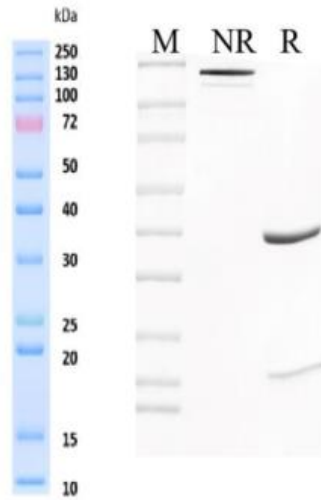
Antibody Information

Expression System	CHO
Aggregation	< 5% as determined by SEC-HPLC
Purity	> 95% as determined by SDS-PAGE
Endotoxin	< 1 EU/mg, determined by LAL gel clotting assay
Sterility	0.2 μm Filtered
Target	CTLA4
Clone	Ipilimumab
Alternative Names	CD; GSE; GRD4; ALPS5; CD152; CTLA-4; IDDM12; CELIAC3
Source/Isotype	Monoclonal human IgG1 (RDEL),Kappa
Application	/
Description	This gene is a member of the immunoglobulin superfamily and encodes a protein which transmits an inhibitory signal to T cells. The protein contains a V domain, a transmembrane domain, and a cytoplasmic tail. Alternate transcriptional splice variants, encoding different isoforms, have been characterized. The membrane-bound isoform functions as a homodimer interconnected by a disulfide bond, while the soluble isoform functions as a monomer. Mutations in this gene have been associated with insulin-dependent diabetes mellitus, Graves disease, Hashimoto thyroiditis, celiac disease, systemic lupus erythematosus, thyroid-associated orbitopathy, and other autoimmune diseases.
Formulation	phosphate-buffered solution, pH 7.4.

Version:3.1.3 Revision Date:15/09/2023

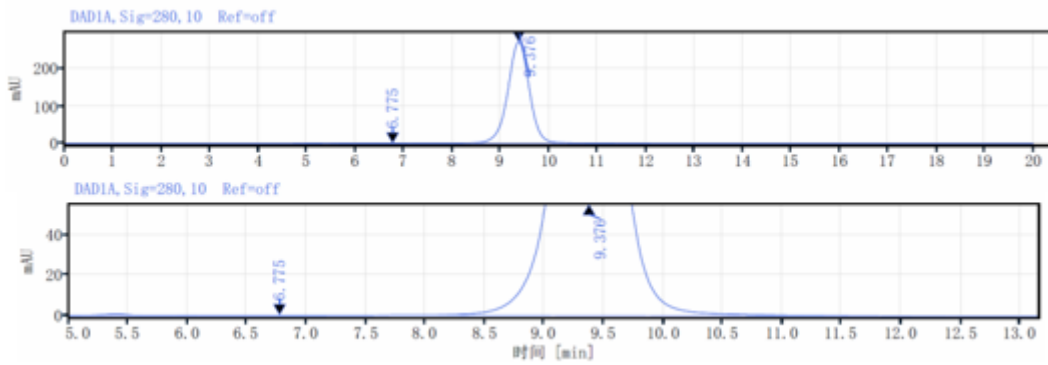
Data Examples

SDS-PAGE



On SDS-PAGE under reducing (R)/non-reducing(N-R) condition. The gel was stained overnight with Coomassie Blue. The purity of the protein is greater than 95%.

SEC-HPLC



The purity of this product is more than 95% verified by SEC-HPLC